

THORN

LIGHTING



AXYL TRIM

A TOUCH OF CLASSIC

A TOUCH OF CLASSIC

Ideal for lighting residential and public spaces, Axyl Trim is a classic recessed wall luminaire available in rectangular or square shapes.

An excellent solution for wayfinding applications, supporting navigation through outdoor areas and stair treads.

The range is available with an opal diffused lit effect or, for a dark sky sensitive solution, an asymmetric light distribution with optional grid louvre and baffle accessories.

This range is available as Non-Dim (On/Off) driver on-board, or a separate remote DALI-2 driver can be purchased to offer lighting control.



AXYL TRIM

FEATURES

SHAPE AND SIZES

Axyl Trim is available in two shapes and sizes.
Small: Square (106 mm)
Large: Rectangle (230 x 102 mm) with trim.

LIGHT QUALITY

CRI 90, Opal toughened glass diffuser
(Non-Dim version).

VISUAL COMFORT

The range is available with an opal cover offering a diffused light effect, or with a front grille for applications where screened light directed downwards is preferred.

CONTROLLABILITY

Available as Non-Dim (On/Off), or a remote DALI-2 driver can be ordered separately.

DURABILITY

Axyl Trim is rated IK06 (Opal, Grid, Visor and Baffle Trim) and IK10 (Performance Trim), and all versions are IP65 rated.
Corrosion Class C3.

HOUSING COLOUR

Available in White (R9016), Black (R9005), Light Grey (R9006) and Anthracite Grey (G9005).

TECHNICAL DESCRIPTION

Die-cast aluminium housing with high corrosion resistance.
Opal toughened glass diffuser.
Stainless steel A4 screws.
Silicone gaskets.
Double Powder Paint process.
Electrical Class I.
Risk Class RG1.
3 SDCM COB light engine.
Operating Ambient Temperature -20 °C to +50 °C.
Lifetime 70 000 Hrs L80 B10 Ta 25 °C / 50 000 Hrs L80 B10 Ta 40 °C.

CERTIFICATION



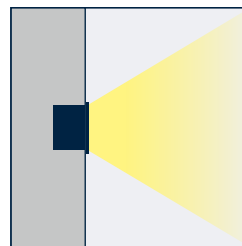
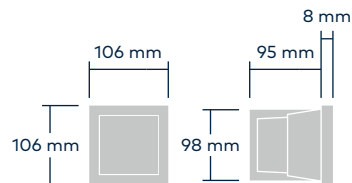
PHOTOMETRIC SUMMARY

Shape	Colour temp	Front grille	Beam angle	Lumen output (lm)	Power (W)	Rated input Power (W)	Luminaire efficacy (lm/W)
Rectangular	927 (2700 K)	Performance	Asymmetrical	408	8.7	11.8	34.58
	930 (3000 K)			430			36.44
	940 (4000 K)			463			39.24
	927 (2700 K)	Opal	Symmetrical	509		11	46.27
	930 (3000 K)			479			43.55
	940 (4000 K)			532			48.36
	927 (2700 K)	Grid	Asymmetrical	120		10.9	11.01
	930 (3000 K)			128			11.74
	940 (4000 K)			136			12.48
	927 (2700 K)	Visor	Asymmetrical	272	8.7	11	24.73
	930 (3000 K)			289			26.27
	940 (4000 K)			309			28.09
	927 (2700 K)	Baffle	Asymmetrical	154			14.00
	930 (3000 K)			164			14.91
	940 (4000 K)			175			15.91
Square	927 (2700 K)	Opal	Symmetrical	91	2.8	3.4	26.76
	930 (3000 K)			97			28.53
	940 (4000 K)			104			30.59
	927 (2700 K)	Grid	Asymmetrical	21			6.18
	930 (3000 K)			22			6.47
	940 (4000 K)			23			6.76
	927 (2700 K)	Visor	Asymmetrical	46			13.53
	930 (3000 K)			49			14.41
	940 (4000 K)			52			15.29
	927 (2700 K)	Baffle	Asymmetrical	35			10.29
	930 (3000 K)			37			10.88
	940 (4000 K)			40			11.76

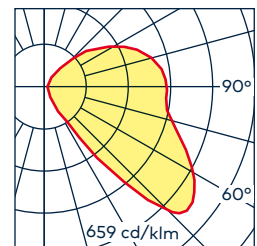
AXYL TRIM

WALL RECESSED

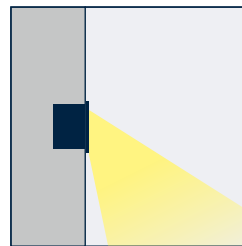
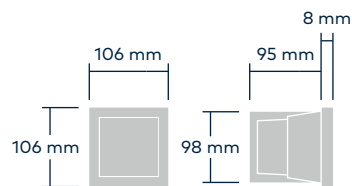
SMALL (OPAL TRIM)



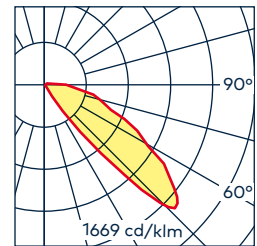
**SYMMETRICAL BEAM
(SS)**



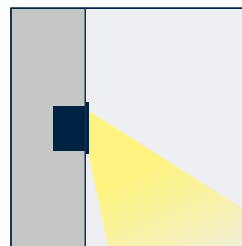
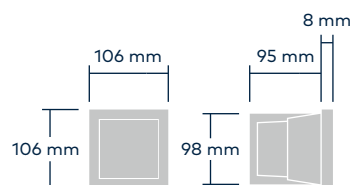
SMALL (GRID TRIM)



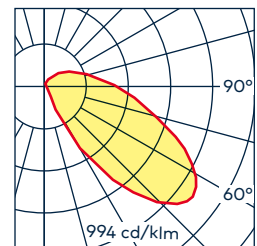
**ASYMMETRICAL BEAM
(AS)**



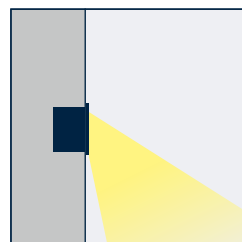
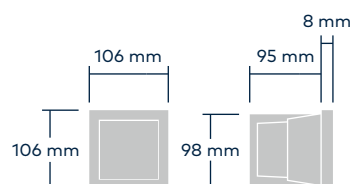
SMALL (VISOR TRIM)



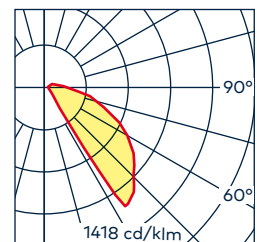
**ASYMMETRICAL BEAM
(AS)**



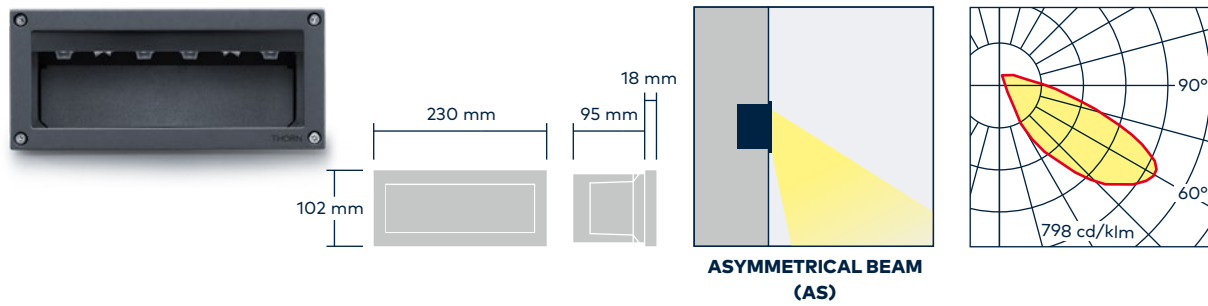
SMALL (BAFFLE TRIM)



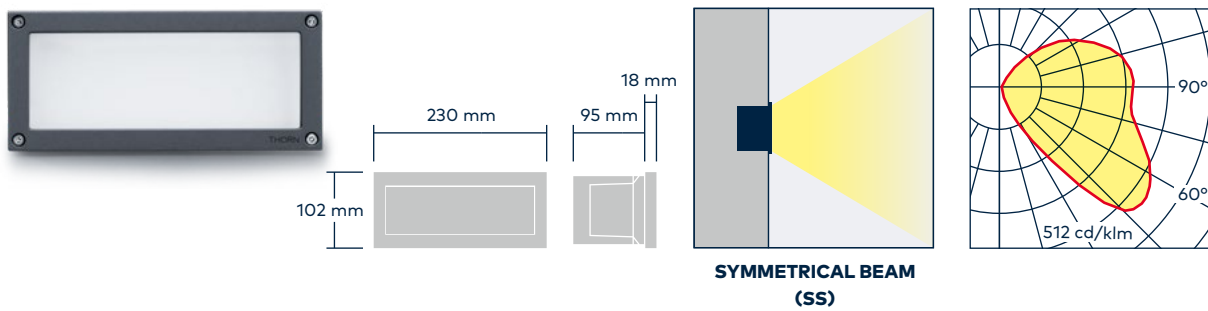
**ASYMMETRICAL BEAM
(AS)**



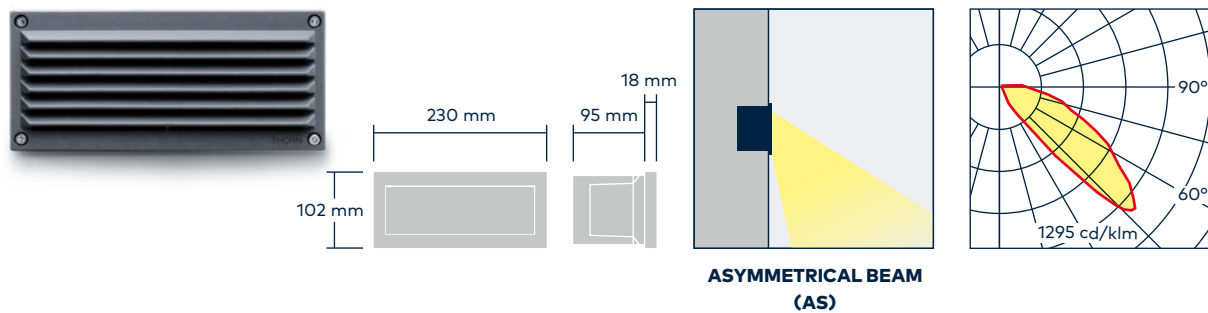
LARGE (PERFORMANCE TRIM)



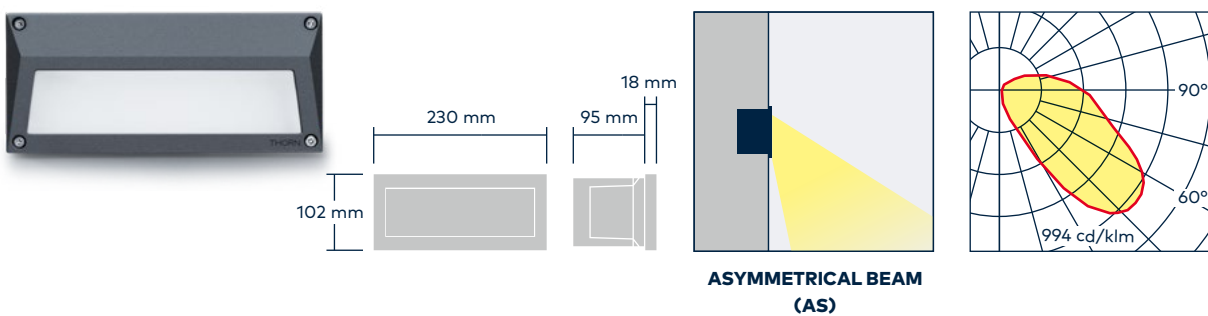
LARGE (OPAL TRIM)



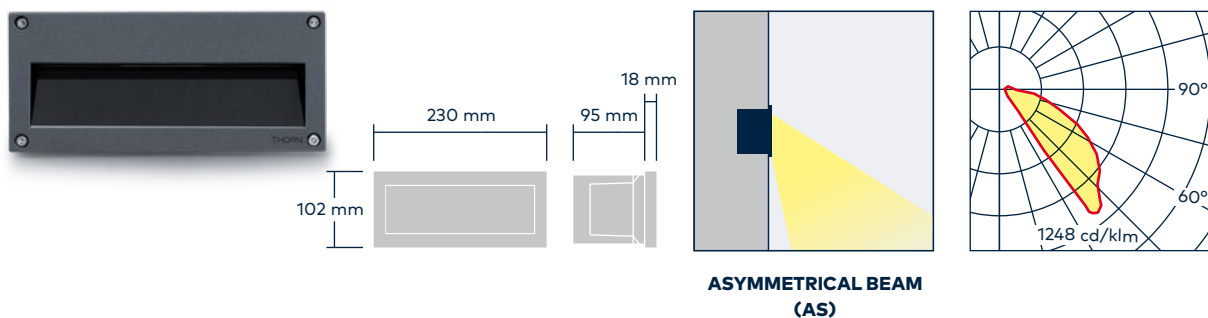
LARGE (GRID TRIM)



LARGE (VISOR TRIM)



LARGE (BAFFLE TRIM)



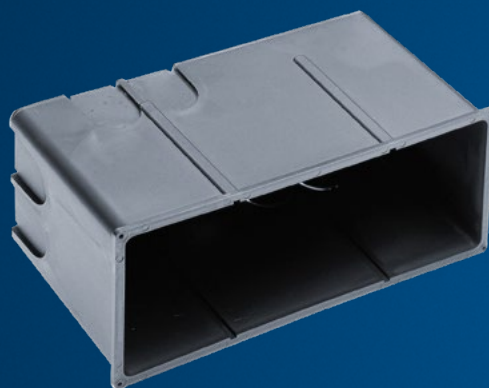
ACCESSORIES



ORDERING CODE: 96700399

RECESSED BOX.

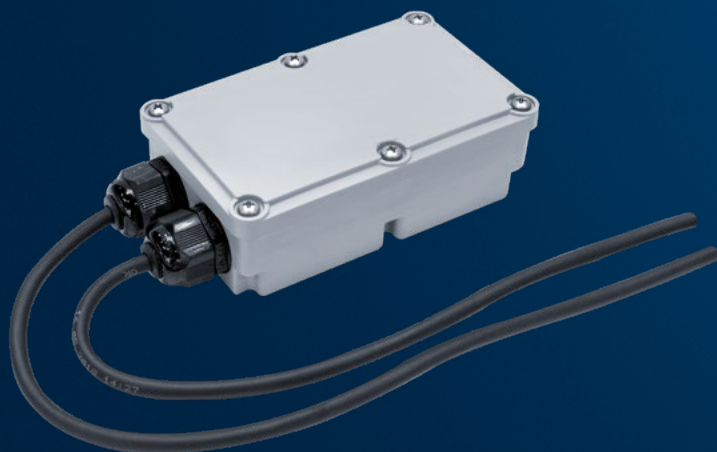
For small versions. Dimensions;
98 mm width x 98 mm height x 95 mm depth.



ORDERING CODE: 96700290

RECESSED BOX.

For large versions. Dimensions;
220 mm width x 92 mm height x 95 mm depth.



ORDERING CODE: 96700028

(GB IP67 20 W 230 V 250-700 CL2 KFX)

POWER SUPPLY MULTI-POWER
230 V/250 mA-700 mA DALI-2, DIM IN BOX.
IP67, 20 W, CLASS II.
Dimensions; 175.5 mm x 86.5 mm x 43 mm.

Will operate:

- One large luminaire

Maximum distance between luminaire
and power supply 10 m.
Operating Ambient Temperature -20 °C to +50 °C.
Built-in surge protection (kV) L/N-PE: 2 kV.

ORDERING CODE: 96700029

(GB IP67 23 W 230 V 100-800 CL2 HFX)

POWER SUPPLY MULTI-POWER 230 V/100 mA-
800 mA DALI-2 DIMMABLE, PUSH DIM IN BOX.
IP67, 23 W, CLASS II.
Dimensions; 175.5 mm x 86.5 mm x 43 mm

Will operate:

- Six small luminaires

Maximum distance between luminaire
and power supply 10 m.
Operating Ambient Temperature -20 °C to +50 °C.
Built-in surge protection (kV) L/N-PE: 2 kV.







BUILD YOUR PRODUCT

AXYL TRIM



WALL RECESSED

Product	Size (Shape)	Front grille		LED		Colour temp	Optic		Control		Body colour			
Axyl Trim	Square (106 mm)	S	TRIM luminaire equipped with PERFORMANCE trim	PERF	LED Module made of a single LED (S only)	1L	CRI 90 2700 K	927	Asymmetrical Beam	AS	Non-Dim	HF	White	WH
	Rectangle (230 mm x 102 mm) with trim	L	TRIM luminaire equipped with OPAL trim	OPAL	LED Module made of 6 LEDs	6L	CRI 90 3000 K	930	Symmetrical Beam	SS	Remote DALI-2	RD*	Black	BK
			TRIM luminaire equipped with a GRID trim	GRID			CRI 90 4000 K	940					Light Grey	GY
			TRIM luminaire equipped with a VISOR etched glass trim	VISO									Anth Grey	ANT
			TRIM luminaire equipped with a BAFFLE trim	BAFF										

EXAMPLE PRODUCT DESCRIPTION												
Axyl Trim	L	PERF	6L	927	AS	RD	ANT					

* Note: If the RD (Remote DALI-2) option is selected, this will need ordering separately.
Visit the website for more information.



As a globally leading luminaire manufacturer, Thorn Lighting provides a five-year warranty for its complete product range within all European Countries.
thornlighting.com/guarantee

Thorn Lighting is constantly developing and improving its products. All descriptions, illustrations, drawings and specifications in this publication present only general particulars and shall not form part of any contract. The right is reserved to change specifications without prior notification or public announcement. All goods supplied by the company are supplied subject to the company's General Conditions of Sale, a copy of which is available on request. All measurements are in millimetres and weights in kilograms unless otherwise stated.
12/2024 (INT)

WE
MAKE
LIGHT
WORK