

Voyager One

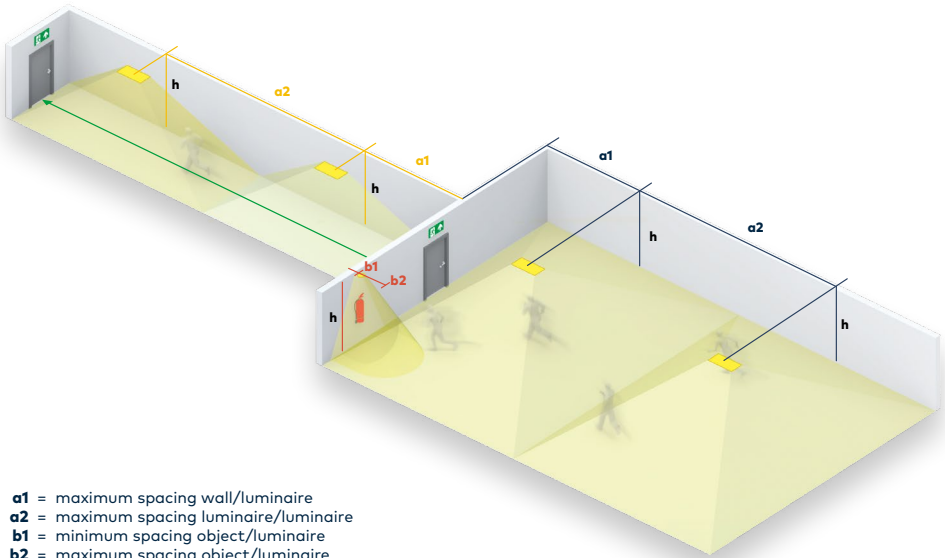
96631596/96631597

VOYAGER ONE MS ANT E3/E3T WH IP65

without lens



www.thornlighting.com/VOYO



- a1** = maximum spacing wall/luminaire
- a2** = maximum spacing luminaire/luminaire
- b1** = minimum spacing object/luminaire
- b2** = maximum spacing object/luminaire
- h** = ceiling height

| | antipanic (0,5 lx) | | antipanic (1 lx) | |
|-------|--------------------|-------|------------------|-------|
| h | a1 | a2 | a1 | a2 |
| 2,50 | 3,20 | 9,30 | 2,55 | 7,70 |
| 3,00 | 3,40 | 10,10 | 2,70 | 8,35 |
| 3,50 | 3,60 | 10,85 | 2,75 | 8,95 |
| 4,00 | 3,75 | 11,55 | 2,80 | 9,40 |
| 4,50 | 3,85 | 12,15 | 2,80 | 9,80 |
| 5,00 | 3,90 | 12,70 | 2,70 | 10,15 |
| 6,00 | 3,95 | 13,60 | 1,80 | 10,70 |
| 7,00 | 3,85 | 14,35 | * | 11,05 |
| 8,00 | 3,60 | 14,90 | * | 11,15 |
| 9,00 | 3,15 | 15,35 | * | 11,05 |
| 10,00 | 2,45 | 15,65 | * | 10,00 |

a1/a2 spacing values valid for longitudinal and transversal axis of luminaire
 All values in metres, all values for $t_a = 30^\circ\text{C}$, maintenance factor = 0,8

*Determine a1/a2/b1/b2 figure by means of lighting calculation (taking adjacent luminaires into account)