

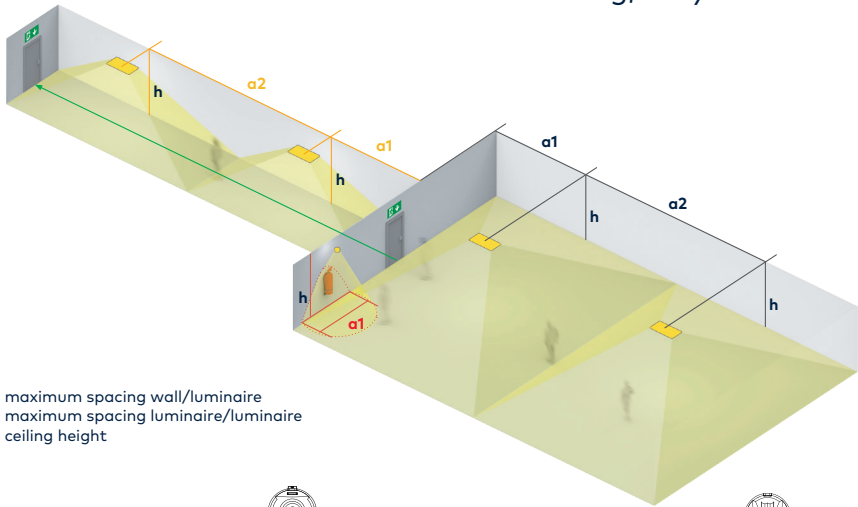
# Voyager

## Fit



[www.thornlighting.com/VOYF](http://www.thornlighting.com/VOYF)

Super compact, long lasting, easy to use

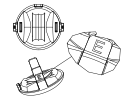


**a1** = maximum spacing wall/luminaire  
**a2** = maximum spacing luminaire/luminaire  
**h** = ceiling height



### VOYAGER FIT - ANTIPANIC LENS

|      | antipanic (0,5 lx) |       |
|------|--------------------|-------|
| h    | a1                 | a2    |
| 2,50 | 3,70               | 10,70 |
| 3,00 | 3,70               | 11,75 |
| 3,50 | 3,70               | 12,75 |
| 4,00 | 3,55               | 13,70 |
| 4,50 | 3,50               | 14,20 |
| 5,00 | 3,35               | 14,65 |

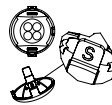


### VOYAGER FIT - ESCAPE LENS

|      | escape (1 lx) |       |
|------|---------------|-------|
| h    | a1            | a2    |
| 2,50 | 4,65          | 11,55 |
| 3,00 | 4,70          | 12,55 |
| 3,50 | 4,95          | 13,20 |
| 4,00 | 5,15          | 13,25 |
| 4,50 | 5,30          | 13,65 |
| 5,00 | 5,40          | 14,05 |

### VOYAGER FIT - SPOT LENS

|      | spot (5 lx) |
|------|-------------|
| h    | a1          |
| 2,50 | 2,20        |
| 3,00 | 2,40        |
| 3,50 | 2,40        |
| 4,00 | 2,50        |
| 4,50 | 2,50        |
| 5,00 | 2,50        |



All values in metres, all values for  $t_a = 30\text{ }^\circ\text{C}$ , maintenance factor = 0.8